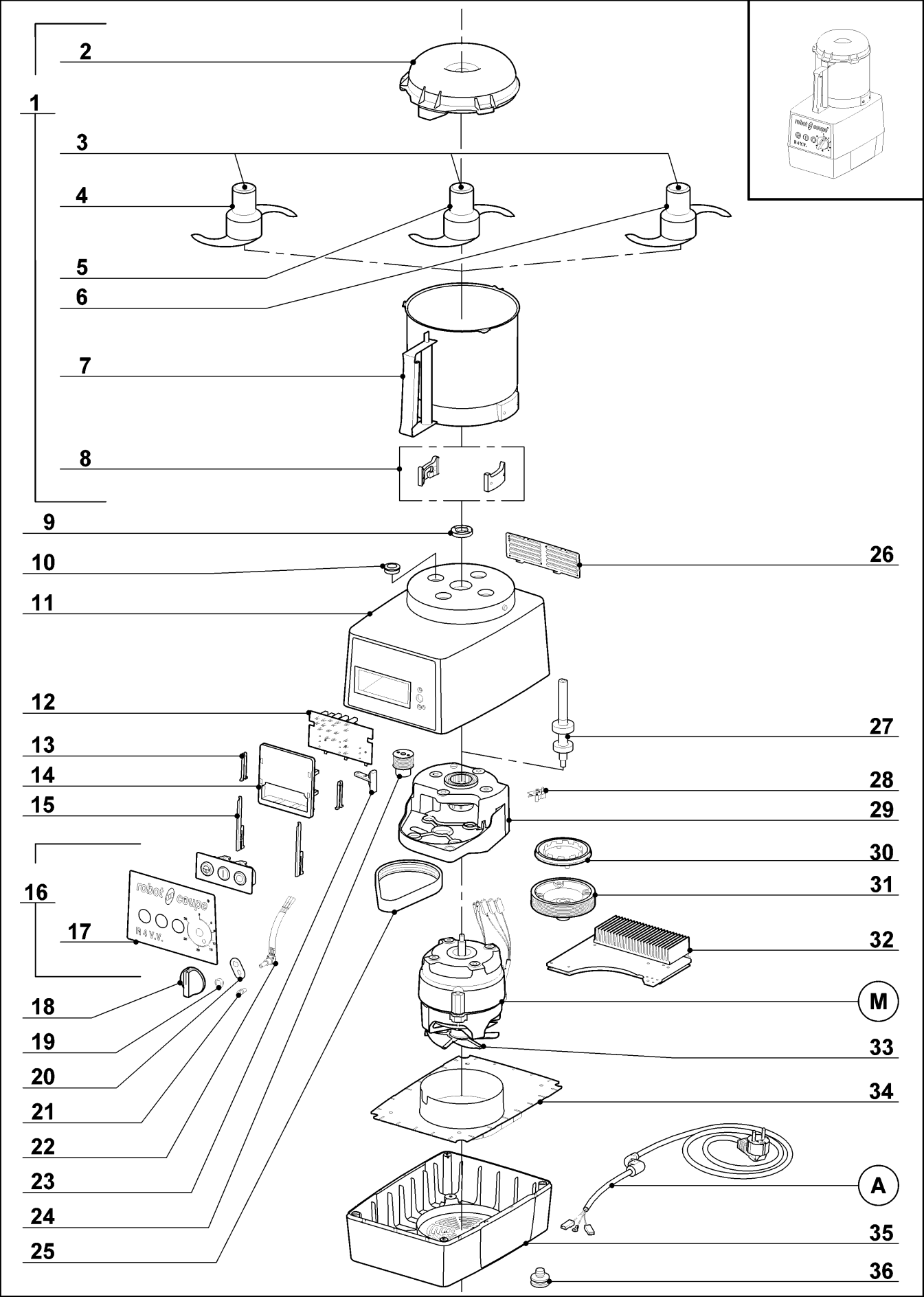


robot coupe®

R 4 V.V.



| Index | Pièce / Part | Désignation | Description |
|-------------|-----------------|-----------------------------------|--------------------------------------|
| 1 | 27 251 | CUTTER COMPLET | / CUTTER ATTACHEMENT |
| 2 | 117 395 | COUVERCLE CUTTER | / CUTTER LID |
| 3 | 104 147 | CAPUCHON COUTEAU | / BLADE CAP |
| 4 | 104 429 | COUTEAU LISSE | / STRAIGHT BLADE |
| 5 | 104 430 | COUTEAU DENTE | / FINE SERRATED BLADE |
| 6 | 104 431 | COUTEAU CRANTE | / SERRATED BLADE |
| 7 | 104 085 | ENSEMBLE CUVE CUTTER | / CUTTER BOWL ASSEMBLY |
| 8 | 29 081 | ENS PLAQUETTE | / LOCKING PLATE ASSEMBLY |
| 9 | 501 010 | BAGUE ETANCHEITE | / MOTOR SEAL |
| 10 | 104 070 | CAPSULE CACHE VIS | / BOLT COVER |
| 11 | 39 121 | ENS SUPPORT MOTEUR | / MOTOR SUPPORT ASSEMBLY |
| 12 | 102 921 | CARTE BOUTON | / CONTROL PCB |
| 13 | 102 913 | CLAVETTE PLASTRON | / PANEL KEY |
| 14 | 102 911 | SUPPORT PLATINE | / PCB SUPPORT |
| 15 | 117 703 | CLAVETTE FIXE PLATINE | / PCB KEY |
| 16 | 39 204 | ENS TABLEAU COMMANDE | / SWITCH ASSEMBLY |
| 17 | 407 840 | PLAQUE FRONTALE | / FRONT PLATE |
| 18 | 117 073 | POIGNEE POTENTIOMETRE | / POTENTIOMETER HANDLE |
| 19 | 103 308 | ECROU EPAULE POTENTIOMETRE | / POTENTIOMETER NUT |
| 20 | 101 551 | PLAQUE ANTIROTATION POTENTIOMETRE | / POTENTIOMETER ANTI-ROTATING WASHER |
| 21 | 102 106 | BUTEE POTENTIOMETRE | / POTENTIOMETER STOP |
| 22 | 39 202 | POTENTIOMETRE | / POTENTIOMETER |
| 23 | 29 441 | ENS ILS CUTTER | / CUTTER REED SWITCH ASSEMBLY |
| 24 | 102 924 | POULIE MOTRICE | / SMALL PULLEY |
| 25 | 503 940 | COURROIE | / BELT |
| 26 | 104 122 | GRILLE VENTILATION INOX | / VENT COVER |
| 27 | 29 604 | ENS AXE TRANSMISSION | / TRANSMISSION SHAFT ASSEMBLY |
| 28 | 102 920 | CARTE CAPTEUR | / SENSOR PCB |
| 29 | 104 125 | SUPPORT TRANSMISSION | / TRANSMISSION SUPPORT |
| 30 | 102 922 | ROUE DENTEE | / TOOTHED WHEEL |
| 31 | 102 923 | POULIE RECEPTRICE | / LARGE PULLEY |
| 32 | 102 934 | VENTILATEUR GEOM VARIABLE | / MOTOR FAN. |
| 33 | 102 935 | VARIATEUR | / VARIATOR |
| 34 | 104 109 | DEFLECTEUR | / DEFLECTOR |
| 35 | 39 112 | ENS SOCLE | / BASE ASSEMBLY |
| 36 | 101 082 | PIED | / FOOT |
| <hr/> | | | |
| A | | CABLE D'ALIMENTATION | / POWER CORD |
| M | | MOTEUR | / MOTOR |
| <hr/> | | | |
| Machine | Voltage | A | M |
| 22 336 | 200-230/50-60/1 | 504 279 | 303 076 |
| 22 337 UK | 200-230/50-60/1 | 504 280 | 303 076 |
| 22 338 Aust | 200-230/50-60/1 | 504 281 | 303 076 |